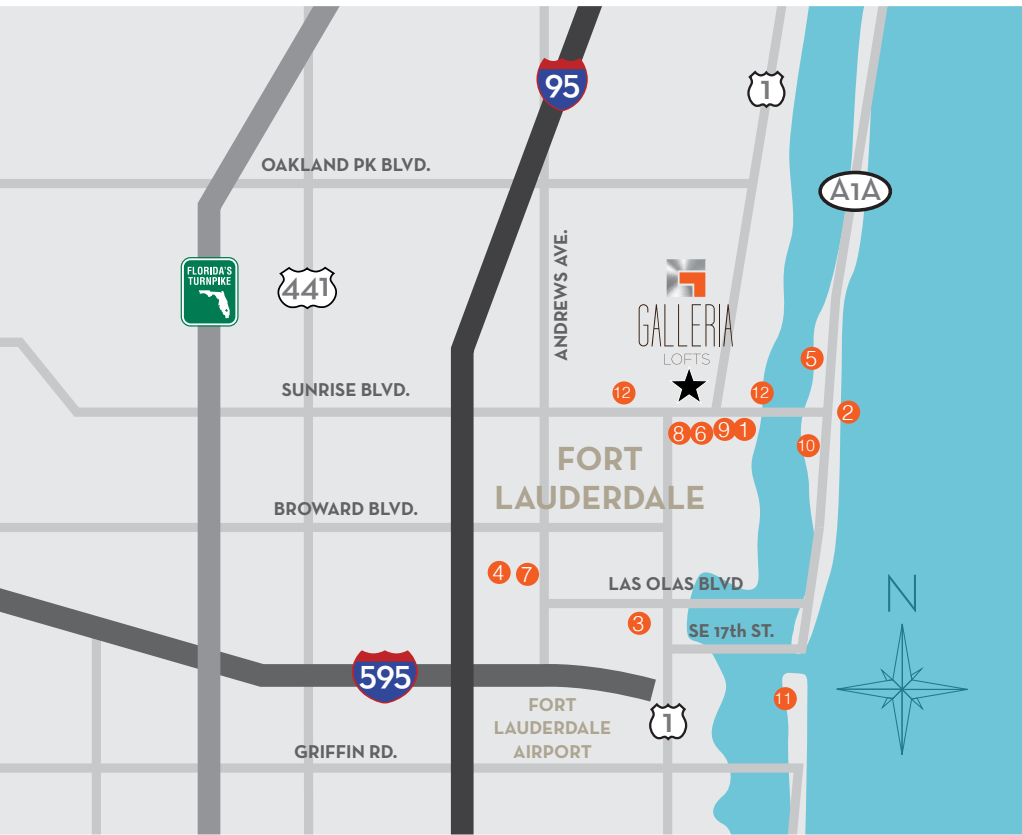


CLOSE TO EVERYTHING YOU LOVE ABOUT FT. LAUDERDALE



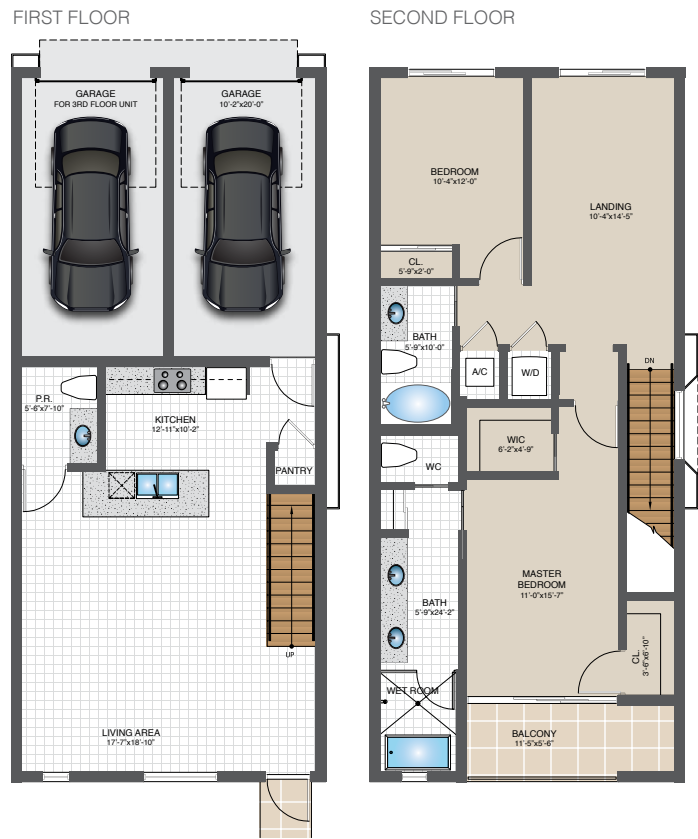
- 1 The Galleria at Ft. Lauderdale
- 2 Ft. Lauderdale Beach
- 3 Downtown Ft. Lauderdale
- 4 Museum of Discovery & Science/IMAX
- 5 Hugh Taylor Birch State Park
- 6 Holiday Park
- 7 Broward College
- 8 Parker Playhouse
- 9 Gateway Theater
- 10 Bonnet House Museum & Gardens
- 11 Port Everglades
- 12 Publix Supermarket(s)



NEW LUXURY RESIDENCES IN THE HEART OF FT. LAUDERDALE

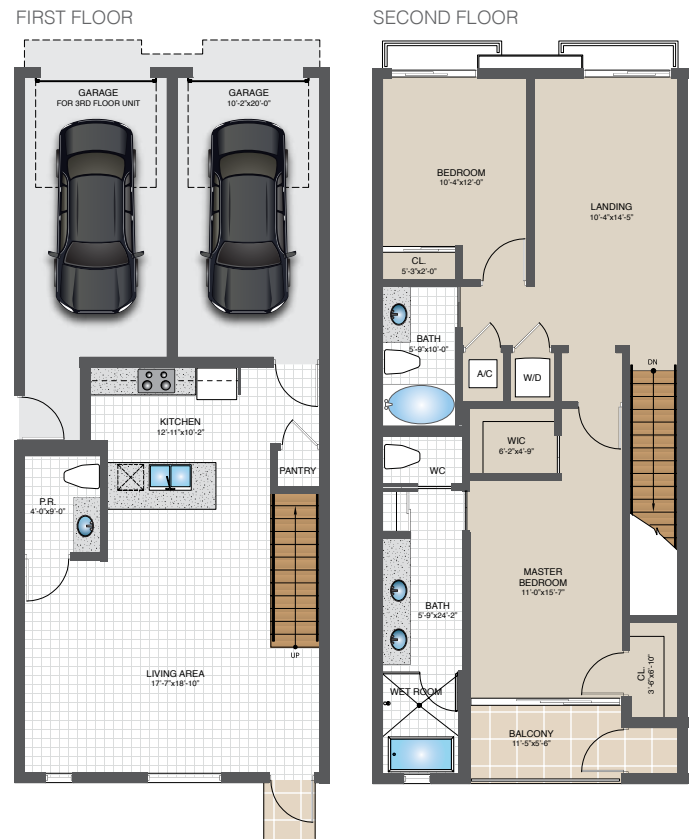


Plans, elevations, specifications, features, colors, designs, dimensions and materials are all subject to availability, and to change or substitution at any time and without notice. SobelCo expressly reserves the right to make modification, revisions and changes as may be required for lot fit or by governmental bodies and law, or other reasons as set forth in the Purchase Agreement. Illustrations of elevations and plans are artist's depictions only. Plans are only for illustrative and conceptual purposes, are not to scale, and may be the reverse (mirror image) of those shown. The drawings and floor plans in this brochure should not be relied upon, express or implied, for the final detail, feature or dimensions of any home. All measurements, including, but not limited to, room dimensions, balconies, porches and ceiling and wall heights are approximate and may vary from those shown as a result of, among other things, (i) the elevation and home-site selected, and/or (ii) construction materials, construction practices, field conditions and flooring thickness. Square footages are approximate and are measured from the outside of exterior walls. In production, plans and elevations may vary in precise details and dimensions, and may not actually be constructed as shown. The fixture shapes shown are graphical in nature and are not necessarily indicative of a particular style or model. In addition, some features shown in the model homes may not be included in the purchase price of the home as quoted. Please consult your sales representative and refer to the Purchase Agreement in order to determine which features, specifications and elevations are included in any home you may purchase. Stock photography includes stock images and is used to depict the spirit of lifestyle and not for specific references. Map is for illustration purposes, not to scale and for approximate location only. For exact locations consult a sales representative. CBC017578



MODEL A

2 Bedroom, 2.5 Bath | 1,874 A/C sq. ft.
2,204 Total sq. ft.



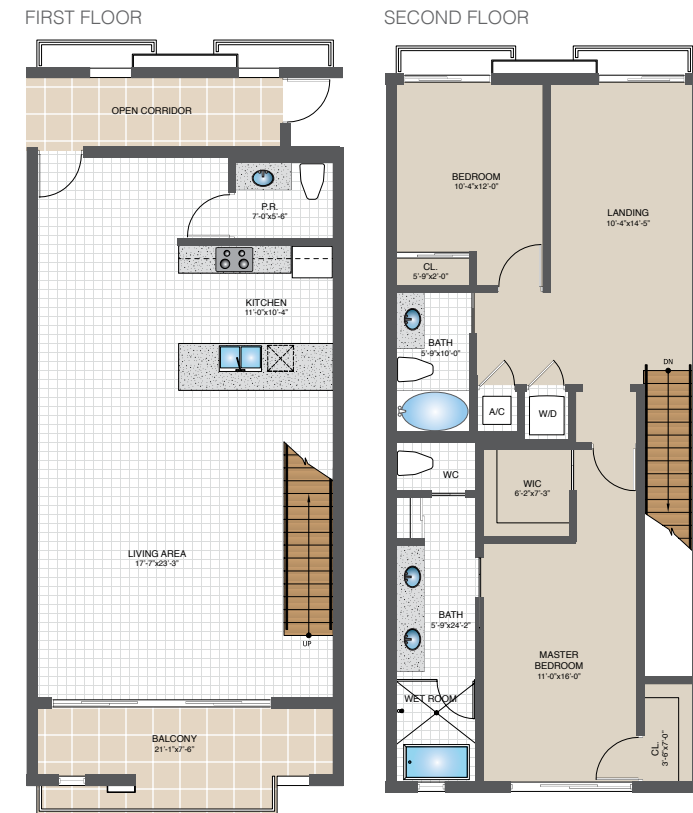
MODEL B

2 Bedroom, 2.5 Bath | 1,825 A/C sq. ft.
2,147 Total sq. ft.



MODEL C

2 Bedroom, 2.5 Bath | 1,767 A/C sq. ft.
2,113 Total sq. ft.



MODEL D

2 Bedroom, 2.5 Bath | 2,438 A/C sq. ft.
2,803 Total sq. ft.



MODEL E

2 Bedroom, 2 Bath | 2,202 A/C sq. ft.
2,591 Total sq. ft.



GALLERIA LOFTS IS THE LATEST COLLECTION OF MODERN LUXURY RESIDENCES FROM LEADING SOUTH FLORIDA BUILDER SOBELCO. AN INTIMATE COMMUNITY OF JUST 48 HOMES, GALLERIA LOFTS COMBINES CHIC INDULGENCE WITH SPACIOUS COMFORT TO FORM A TRANQUIL, URBAN OASIS FOR ANY LIFESTYLE, JUST STEPS FROM WORLD FAMOUS FT. LAUDERDALE BEACH.

COMMUNITY HIGHLIGHTS

- Gated private entry
- Modern, chic swimming pool
- Open, spacious home concepts
- Standard Luxury Interior Features
- Less than one mile from World Famous Ft. Lauderdale Beach
- Moments from Downtown Ft. Lauderdale, Las Olas Blvd and Galleria Mall.
- Residences will be delivered finished with sophisticated, modern finishes